

ATWELL COLLEGE



# Course Selection Handbook



## Year 11/12

Making the transition to Senior School is an exciting opportunity for our Year 10 students to shape their own future in an increasingly connected world. We are seeing new technology disrupt the traditional concept of an orderly career progression meaning students need tools for lifelong learning as they adapt to the new career mind-set. This is part of our focus to provide courses that will engage you in a relevant program that links directly to post school training, further education or employment. Whether that pathway is Australian Tertiary Admission Rank (ATAR), Vocational Education Training (VET) or General there is something for everyone. We are committed to having all our students achieve the Western Australian Certificate of Education (WACE) through successful completion of their studies in Years 11 and 12 ultimately improving their longer term employment prospects, earning capacity and strengthening their career development.

Year 10 students should use this handbook as a guide of the courses available and other vital information necessary to make informed choices for students entering *Senior School* at Atwell College.

The Year 11/12 Course Selection Handbook summarises what you need to know about the Western Australian Certificate of Education (WACE) in preparation for Years 11 and 12.

It contains information on:

- Pathways
- Courses and course units
- Vocational Education and Training (VET)
- Requirements to achieve the WACE

The handbook should be used in conjunction with advice and information available at Parent Information Evenings and from Course Counsellors who will meet with individual students and parents to discuss their chosen pathway.

Atwell College makes every effort to accommodate all choices, however, insufficient students choosing a course and/or grid line clashes may result in some students having to reselect. You will be informed should you be affected by this. It is *your* responsibility to ensure that your selections qualify you for any future course or desired career and that these units are appropriate given your previous achievement and attendance patterns.

## Information regarding Year 11 & 12 Charges

For Years 11 and 12 there are no maximum charges set by the State Government. Schools endeavour to set their own charges for these years and such charges are **compulsory**. The College can also request a 50% confirmation payment for these years.

The course costs within this handbook are indicative only. Contributions and Charges for 2020 are approved by the College Board later in the year and advised to parents prior to the end of Term Four in 2019.

50% of charges are required to be paid by the start of the College year with the balance to be paid by the end of Term One. Payment options may also be considered. Contact the Finance department on (08) 6174 2209 for further information.

Charges will depend upon the course chosen. Some specific courses will incur higher costs dependent upon such items as text, subject specific resources, materials, excursions, Certificates and work placement. Students involved in work placement must pay the associated fees prior to commencement of the work placement. Students offered selected off site programs which are delivered by external providers such as Certificates will be charged by the external provider.

We urge you to start making plans now so that you are in a position to pay your Compulsory Charges prior to the end of Term One in 2020.

## Payment Options

**Cash/Cheque/EFTPOS/Credit Card** at Atwell College Reception Administration Building

**Direct Deposit** to Atwell College

Account Name:	Atwell College
BSB:	066-040
Account Number:	19900946
Reference:	Student's Name



Visit: [Atwell College Website Payments](#)



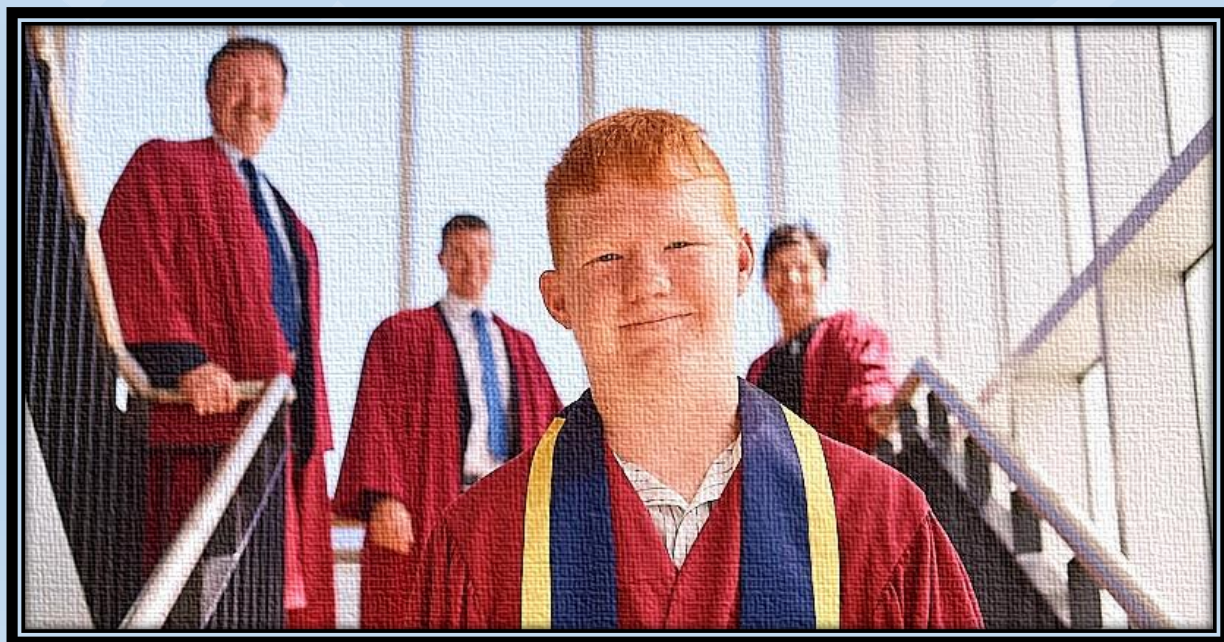


## Western Australia Statement of Student Achievement (WASSA)

The WASSA is issued to each Year 12 student at the completion of their senior secondary schooling; senior secondary school typically takes two years. The WASSA lists all courses and programs that a student has completed and the grades and marks achieved.

The WASSA formally records, as relevant:

- achievement of WACE requirements
- achievement of the literacy (reading and writing) standard
- achievement of the numeracy standard
- achievement of any exhibitions and awards
- school grades, school marks and combined scores in ATAR courses
- school grades and school marks in General and Foundation courses
- completed Preliminary units
- completed VET industry specific courses
- successfully completed VET qualifications and VET units of competency
- completed endorsed programs





The WACE is a certificate that demonstrates significant achievement over Years 11 and 12.

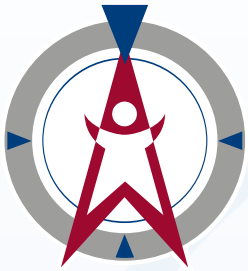
## The WACE requirements for Year 12, 2021

Achievement of your WACE acknowledges that at the end of your compulsory schooling you have achieved or exceeded the required minimum standards in an educational program that has suitable breadth and depth.

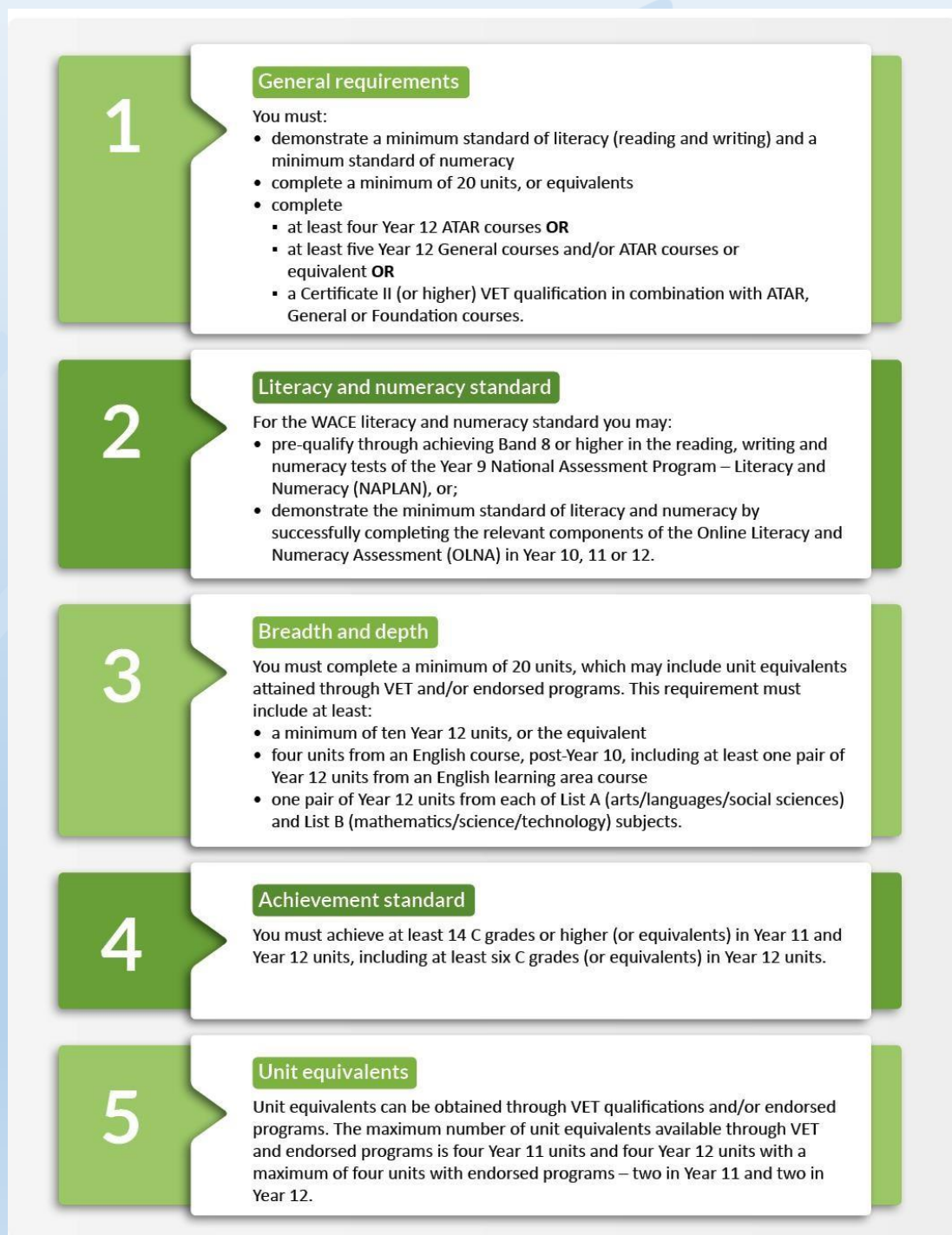
To achieve a WACE a student must satisfy the following:

- Breadth and Depth
- Achievement Standard
- Demonstrate a minimum standard of literacy and a minimum standard of numeracy
- Complete a minimum of 20 units, or equivalents as described below
- Complete:
  - at least four Year 12 ATAR courses, \* OR
  - at least five Year 12 General courses\*\* and/or ATAR courses or equivalent, \* OR
  - a Certificate II\*\*\* (or higher\*\*\*\*) VET qualification in combination with ATAR, General or Foundation courses.
- \*In the context of ATAR courses in the WACE, the term 'complete' requires a student to sit the ATAR course examination or has an approved sickness/misadventure application for not sitting the examination in that course. Students who do not sit the ATAR course examination will not have a course mark or grade recorded on their WASSA, nor will they receive an ATAR course report. The pair of units will not contribute to any WACE requirements.
- Note: for ATAR courses with practical components, students must complete both the written and practical examinations.
- \*\*Foundation courses do not contribute to meeting the WACE achievement requirement with this option. Students taking Foundation courses must complete a Certificate II or higher.
- \*\*\*In the context of VET in the WACE, the term 'complete' requires that a student has been deemed competent in all units of competency that make up a full qualification.
- \*\*\*\*The partial completion of a Certificate III or higher VET qualification may meet this requirement according to predetermined criteria (see the WACE Manual [here](#) for further information).

Further information can be found on the School Curriculum and Standards Authority (SCSA) website [here](#), refer to the "Year 12 in 2021: Information for Year 10 Subject Selection" Guide.



## Figure 1. WACE requirements 2021 and beyond







## WACE Courses

There are four types of courses developed by the Authority.

1. **ATAR** course units for students who are aiming to enrol in a university course direct from school. These courses will be examined by the Authority and contribute to the achievement of an Australian Tertiary Admission Rank (ATAR).
2. **General** course units for students who are aiming to enter further training or the workforce directly from school. These courses will not be examined by the Authority
3. **VDSS** - VET Delivered to Secondary Students courses for students who are aiming to enter further training or the workforce directly from school. VDSS courses have been developed in close consultation with WA Industry Training Councils and include a full, nationally recognised qualification and mandatory industry-related workplace learning.
4. **Preliminary** course units for those who may need modification to the curriculum to meet their special needs. Preliminary courses do not contribute to the achievement of a WACE.

There are two types of programs which can also contribute to the WACE:

### 1. VET programs

VET qualifications are for students wishing to participate in nationally recognised training. All VET qualifications require registered training organisation (RTO) delivery, assessment and quality control under the relevant VET regulatory body. A Certificate II or higher is one option for helping to meet the WACE requirements. VET credit transfer can contribute up to eight of the 20 units you need to achieve your WACE. These qualifications contribute to the WACE as unit equivalents.

### 2. Endorsed programs

These programs provide access to areas of learning not covered by WACE courses or VET programs and contribute to the WACE as unit equivalents. Endorsed programs may replace up to two Year 11 course units and two Year 12 course units you need to achieve your WACE.

Endorsed programs can be delivered in a variety of settings by schools, community organisations, universities, training organisations and workplaces.

The list of endorsed programs is available on the Authority website [here](#).

You can mix and match these options to provide yourself with the best platform to meet the requirements to achieve your WACE – and for life beyond school.

In Year 10, you have the opportunity to choose what you will study in Years 11 and 12.



## Multiple pathways to achieve the WACE

The WACE breadth and depth of study requirement previously outlined, specifies that students must complete a minimum of 20 units (10 courses) during Years 11 and 12, including a minimum of 10 Year 12 units or equivalents. Students may use ATAR courses, General courses, VDSS courses, Foundation courses (but not Preliminary courses), VET programs, or endorsed programs to meet this requirement.

There are limits to the number of VET programs (not VDSS) and endorsed programs that may contribute to achievement of the WACE. In summary, students can gain unit equivalence of up to four Year 11 units and four Year 12 units on the basis of completed VET programs and endorsed programs but a maximum of four units from endorsed programs.

The following are examples of some study options for students. They do not represent the minimum requirements to achieve a WACE which are previously described.







**Table 1: Examples of study options**

Year of Study	ATAR	General	Foundation	Cert II + (Unit Equivalent)	Endorsed (Unit Equivalent)	Unit Equivalent	ATAR Eligible	WACE Eligible
11	6	-	-	-	-	12	Y	Y
12	6	-	-	-	-	12		
11	4	2	-	-	-	12	Y	Y
12	4	1	-	-	1	11		
11	3	1	-	-	2	10	Y	Y
12	4	2	-	-	-	12		
11	2	3	-	-	-	10	N	Y
12	1	4	-	-	1	11		
11	-	5	-	-	1	11	N	Y
12	-	5	-	-	1	11		
11	-	4	2	-	-	12	N	N*
12	-	3	2	-	-	10		
11	-	2	2	2	1	11	N	Y
12	-	2	1	2	-	10		
11	1	2	-	4	-	10	N	Y
12	1	2	-	4	-	10		

**\*Requires Certificate II**



## Achievement of a WACE

WACE courses are grouped into List A (arts/languages/social sciences) and List B (mathematics/science/technology). Students studying for a WACE are required to select at least one Year 12 course from each of List A and List B.

You are able to select across a range of course units at a range of cognitive levels to suit your skills and post-school aspirations. If you think you will be heading to university once you finish Year 12, you should enrol in at least four ATAR courses to be eligible for an ATAR. The rank is used by universities as a selection mechanism. More information about the ATAR is available on the TISC website [here](#).

Each course has four units – Unit 1 and Unit 2 (Year 11 units) and Unit 3 and Unit 4 (Year 12 units). Unit 1 and Unit 2 **can** be studied as a pair (except VDSS which are paired), Unit 3 and Unit 4 **must** be studied as a pair.

Unlike other WACE courses, VDSS course units are paired in both the Year 11 (Unit 1 and Unit 2) and the Year 12 (Unit 3 and Unit 4) syllabuses. A student who withdraws from a VDSS course after only one semester will not receive VDSS course unit credit for that academic year.

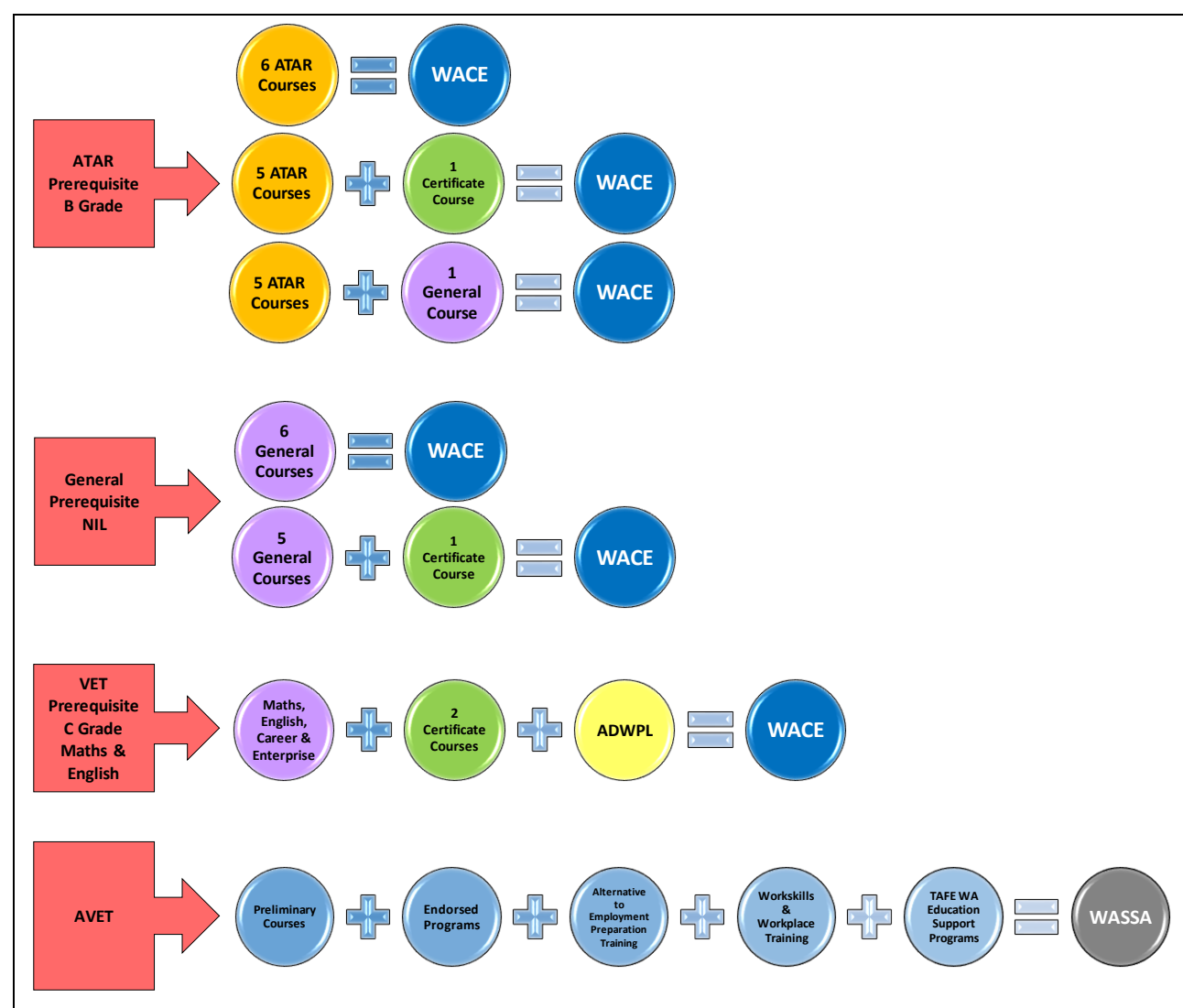
Permission for a student to change courses is a school decision; however, for a student to achieve course unit credits, a change can only be made early in Year 12, before the cut-off date set by the Authority; or in Year 11 after the completion of Unit 1, or at the end of Year 11 after the completion of Unit 2. A student who withdraws from a VDSS course does not achieve course unit credits.

To ensure an appropriate breadth-of-study in your senior secondary studies, you are required to select at least one Year 12 course unit from each of List A and List B subjects.

List A (Arts/Languages/Social Sciences)		List B (Mathematics/Science/Technology)	
CAE	Career and Enterprise	ACF	Accounting and Finance
CFC	Children, Family and the Community	AIT	Applied Information Technology
DAN	Dance	CHE	Chemistry
DRA	Drama	DES	Design
ECO	Economics	EST	Engineering Studies
ENG	English	FST	Food Science and Technology
ELD	English as an Additional Language or Dialect	ISC	Integrated Science
GEO	Geography	MDT	Materials Design and Technology
HEA	Health Studies	MAA	Mathematics Applications
JSL	Japanese: Second Language	MAE	Mathematics Essential
LIT	Literature	MAM	Mathematics Methods
HIM	Modern History	MAS	Mathematics Specialist
MUS	Music	OED	Outdoor Education
VAR	Visual Arts	PES	Physical Education Studies
		PHY	Physics

# Atwell College Senior School Pathway Options

Students can choose from 4 pathways delivered over two years. There are minimum Entry Requirements for some Pathways.





# TABLE OF CONTENTS

Atwell College Senior School Course Descriptions	14
ATAR, General and Certificate Pathways	14
ENGLISH	15
ATAR English – AEENG	15
ATAR English as an Additional Language/Dialect – AEELD	15
ATAR Literature – AELIT	16
General English – GEENG	16
General English as an Additional Language/Dialect – GEELD	17
HEALTH AND PHYSICAL EDUCATION	18
ATAR Health Studies – AEHEA	18
ATAR Physical Education Studies – AEPES	18
General Health Studies – GEHEA	19
General Outdoor Education – GEOED	19
General Physical Education Studies – GEPES	20
SIS20213 Certificate II in Outdoor Recreation – CIHOR	21
SIS20115 Certificate II in Sport and Recreation – CIISR	22
HUMANITIES AND SOCIAL SCIENCE	23
ATAR Accounting and Finance – AEACF	23
ATAR Economics – AEECO	23
ATAR Geography – AEGEO	24
ATAR Modern History – AEHIM	24
General Career and Enterprise – GECAE	25
General Geography – GECEO	25
BSB20115 Certificate II in Business – CIIBU	26
LANGUAGES	27
ATAR Japanese as a Second Language – AEJSL	27
General Japanese as a Second Language – GEJSL	27
MATHEMATICS	29
ATAR Mathematics Applications – AEMAA	29
ATAR Mathematics Methods – AEMAM	29
ATAR Mathematics Specialist – AEMAS	30
General Mathematics Essential – GEMAE	30
SCIENCE	31
ATAR Chemistry – AECEH	31
ATAR Human Biology – AEHBY	31
ATAR Physics – AEPHY	32
General Human Biology – GEHBY	32
General Integrated Science – GEISC	33

# TABLE OF CONTENTS

TECHNOLOGIES	34
ATAR Engineering Studies – AEEST	34
General Applied Information and Technology – GEAIT	34
General Children, Family and the Community – GECFC	35
General Food Science and Technology – GEFST	35
General Materials Design and Technology - Metal – GEMDTM	36
General Materials Design and Technology – Textiles – GEMDTT	36
General Materials Design and Technology – Woodwork – GEMDTW	37
CHC22015 Certificate II Community Services – CIICO	38
MEM20413 Certificate II in Engineering Pathways – CIIENG	39
SIT20316 Certificate II in Hospitality – CIIHOS	40
THE ARTS	41
ATAR Dance – AEDAN	41
ATAR Drama – AEDRA	41
General Dance – GEDAN	42
General Design Graphics – GEDESG	42
General Design Photography – GEDESP	43
General Drama – GEDRA	44
General Music – GEMUS	45
General Visual Art – GEVA	46
ICT20115 Certificate II in Information, Digital Media and Technology (IDMT) – CIIDM	47
Vocational Pathway (VET)	48
Alternative to Employment Preparation Training Pathway (AVET only)	50
Useful Contacts	51
Appendix 1: Atwell College Senior School Honours	52



# **Atwell College Senior School Course Descriptions**

## **ATAR, General and Certificate Pathways**







# ENGLISH

## ATAR ENGLISH AEENG

- 2019 Course cost \$65 per year
- Prerequisite: B grade or higher in Year 10 English



The English ATAR course focuses on developing students' analytical, creative, and critical thinking and communication skills in all language modes, encouraging students to critically engage with texts from their contemporary world, the past, and from Australian and other cultures. Through close study and wide reading, viewing, and speaking and listening, students develop the ability to analyse and evaluate the purpose, stylistic qualities and conventions of texts and to enjoy creating imaginative, interpretive, persuasive and analytical responses in a range of written, oral, multimodal and digital forms.

---

## ATAR ENGLISH as an ADDITIONAL LANGUAGE/DIALECT AEELD

- 2019 Course cost \$65 per year
- Prerequisite: B grade or higher in Year 10 English as an Additional Language/Dialect

The EAL/D courses are designed for students who speak another language or dialect as their first or 'home' language. EAL/D focuses on development of the competent use of Standard Australian English (SAE) in a range of contexts. The EAL/D ATAR course develops academic English skills to prepare students for tertiary study.





# ENGLISH

## ATAR LITERATURE AELIT

- 2019 Course cost \$65 per year
- Prerequisite: B grade or higher in Year 10 English

The Literature ATAR course focuses on the creation of readings of literary texts by students who will respond by creating their own texts, including essays, poems, short stories, plays and multimodal texts. Students engage with literary theory and study literary texts in great detail. Students learn to read texts in terms of their cultural, social and historical contexts; their values and attitudes; and their generic conventions and literary techniques. They learn about and engage with discourse about readings, reading practices and the possibility of multiple readings. Students learn to create texts that pay attention to contexts, values and conventions. Students learn about literary language, narrative, image and the representations offered through their use. Students experience the aesthetic and intellectual pleasure that reading and creating literary texts can bring.

---

## *General* ENGLISH GEENG

- 2019 Course cost \$65 per year

The English General course focuses on consolidating and refining the skills and knowledge needed by students to become competent, confident and engaged users of English in everyday, community, social, further education, training and workplace contexts. The course is designed to provide students with the skills to succeed in a wide range of post-secondary pathways by developing their language, literacy and literary skills. Students comprehend, analyse, interpret, evaluate and create analytical, imaginative, interpretive and persuasive texts in a range of written, oral, multimodal and digital forms.





# ENGLISH

## *General* ENGLISH as an ADDITIONAL LANGUAGE/DIALECT GEELD

- 2019 Course cost \$65 per year
- Prerequisite: Completed Year 10 English as an Additional Language/Dialect

The EAL/D courses are designed for students who speak another language or dialect as their first or 'home' language. EAL/D focuses on development of the competent use of Standard Australian English (SAE) in a range of contexts. The EAL/D General course prepares students for a range of post-secondary destinations in further education, training and the workplace.

---

## Enrolment criteria for English as an Additional Language/Dialect as a Year 12 student

If you do not speak Standard Australian English as your home language or are profoundly deaf and have had limited schooling in English or a limited period of residence in a country where English is not widely used, you may be eligible to enrol in EAL/D.

There is a form that needs to be completed in Year 11 to ensure you are permitted to enrol in EAL/D in Year 12. It is your responsibility to ensure the form is fully and accurately completed before it is submitted. The application form, stating the deadlines for submission, is available on the Authority website [here](#).

You should discuss your enrolment options with the Head of Learning Area (HoLA) English.







# HEALTH & PHYSICAL EDUCATION

## ATAR HEALTH STUDIES

### AEHEA

- 2019 Course cost \$80 per year
- Prerequisite: B grade or higher in Year 10 English and Health Education

In this ATAR course students explore health as a dynamic quality of life. They examine the impact of social, environmental, economic and biomedical determinants on health and their collective contribution to health disparities, as well as exploring approaches to address barriers which prevent groups from experiencing better health. Students apply inquiry skills to examine and analyse health issues, develop arguments and draw evidence-based conclusions. The course also provides students with opportunities to develop skills that will enable them to pursue careers in health promotion, research or community health care.

Students will require the following:

- Textbook

---

## ATAR PHYSICAL EDUCATION STUDIES

### AEPEs

- 2019 Course cost \$140 per year
- Prerequisite: B grade in Year 10 English and Science and B grade in Year 10 PE or Rugby or Netball

Physical Education Studies contributes to the development of students' physical, social and emotional growth. In the Physical Education Studies ATAR course students learn about physiological, psychological and biomechanical principles, and apply these to analyse and improve personal and group performances in physical activities. Throughout the course, students learn through integrated written, oral and active learning experiences. The course also provides students with opportunities to develop skills that will enable them to pursue personal interests and potential in physical activity as athletes, coaches, officials, administrators and/or volunteers.

Students will require the following:

- Textbook



# HEALTH & PHYSICAL EDUCATION

## *General* HEALTH STUDIES GEHEA

- 2019 Course cost \$80 per year

In this General course students explore health as a dynamic quality of life. They will consider the way in which beliefs and attitudes influence health decisions and learn how to plan and take action that will promote their own and the health of others.

They examine the impact of social and environmental factors on health and use inquiry skills to investigate and respond to relevant issues. The course also provides students with opportunities to develop skills that will enable them to pursue careers in health promotion, research or community health care.

Students will require the following:

- Textbook

---

## *General* OUTDOOR EDUCATION GEOED

- 2019 Course cost \$220 per year
- Prerequisite: Must be a proficient swimmer

Through interaction with the natural world, Outdoor Education aims to develop an understanding of our relationships with the environment, others and ourselves. The Outdoor Education General course focuses on outdoor activities in a range of environments, including bushwalking, sailing, climbing and orienteering. It provides students with an opportunity to develop essential life skills and physical activity skills, and an opportunity to develop a comprehensive understanding of the environment and develop a positive relationship with nature. The course also provides students with opportunities to develop skills that will enable them to pursue personal interests and careers in outdoor pursuits, environmental management, or eco-tourism.

Students will require the following:

- Textbook



# HEALTH & PHYSICAL EDUCATION

## *General* PHYSICAL EDUCATION STUDIES GEPES

➤ 2019 Course cost \$140 per year

Physical Education Studies contributes to the development of students' physical, social and emotional growth. The Physical Education Studies General course provides students with opportunities to understand and improve performance through the integration of theoretical concepts and practical activities. Through engagement as performers, leaders, coaches, analysts and planners of physical activity, students may develop skills that can be utilised in leisure, recreation, education, sport development, youth work, health and medical fields.

Students will require the following:

- Textbook





# HEALTH & PHYSICAL EDUCATION

## SIS20213 Certificate II in Outdoor Recreation CIIHOR

This qualification is delivered over two years under the auspices of Australian YMCA Institute of Education and Training RTO 3979.

- 2019 Course cost \$220 per year
- Prerequisite: Must be a proficient swimmer

This qualification provides the skills and knowledge for an individual to be competent in performing core skills in outdoor recreation environments and assisting with the conduct of a range of outdoor activities. Work may be undertaken as part of a team and would be performed under supervision. Work would be undertaken in field locations such as camps or in indoor recreation centres or facilities, in differing environments such as water-based, dry land and mountainous terrains, using a diverse range of equipment.

### Job roles

The following are indicative job roles for this qualification:

- Outdoor activity assistant
- Outdoor participant

### Core Units

- |               |   |
|---------------|---|
| • HLTAID003   | Provide first aid                                     |
| • SISOODR201A | Assist in conducting outdoor recreation sessions      |
| • SISOOPS201A | Minimise environmental impact                         |
| • SISXIND101A | Work effectively in sport and recreation environments |
| • SISXOHS101A | Follow occupational health and safety policies        |



### Elective Units

- |               |   |
|---------------|---|
| • SISOSNK201A | Demonstrate snorkeling activities                             |
| • SISXCAI002A | Assist with activity sessions                                 |
| • SISOFSH201A | Catch and Handle Fish   |
| • SISOCNE202A | Perform deep water rescues                                    |
| • SISOCNE201A | Demonstrate simple canoeing skills                            |
| • SISOABA201A | Demonstrate abseiling skills on artificial surfaces           |
| • SISOABN202A | Safeguard an abseiler using a single rope belay system        |
| • SISOABN201A | Demonstrate abseiling skills on natural surfaces              |
| • SISOSRF201A | Demonstrate surf survival and self-rescue skills              |
| • SISOSRF202A | Demonstrate basic surfing manoeuvres in controlled conditions |

To accommodate the practical elements for this course students will be required to attend a period 0 and will be able to go home early on another day.

# HEALTH & PHYSICAL EDUCATION

## SIS20115 Certificate II in Sport and Recreation CIISR

This qualification is delivered over two years under the auspices of Australian YMCA Institute of Education and Training RTO 3979.

➤ 2019 Course cost \$150 per year

This qualification reflects the role of individuals who apply the skills and knowledge to work in the sport and recreation industry in a generalist capacity.

Likely functions for someone with this qualification include providing support in the provision of sport and recreation programs, grounds and facilities maintenance, routine housekeeping, retail and customer service assistance, administrative assistance and café service in locations such as fitness centres, outdoor sporting grounds or complexes or aquatic centres. All job roles are performed under supervision.

### Job roles

The following are indicative job roles for this qualification:

- Administration assistant
- Community activities assistant
- Recreation assistant
- Retail assistant

### Core Units

- |              |  |
|--------------|--|
| • BSBWOR202  | Organise and complete daily work activities                    |
| • HLEAID003  | Provide first aid  |
| • HLTWHS001  | Participate in workplace health and safety                     |
| • SISXCAI002 | Assist with activity sessions                                  |
| • SISXCCS001 | Provide a quality service                                      |
| • SISXEMR001 | Respond to emergency situations                                |
| • SISXIND001 | Work effectively in sport, fitness and recreation environments |
| • SISXIND002 | Maintain sport, fitness and recreation industry knowledge      |



### Elective Units

- |               |   |
|---------------|---|
| • SISSSPT303A | Conduct basic warm up and cool down programs                    |
| • SISXCAI001  | Provide equipment for activities                                |
| • SISXFAC001  | Maintain sport, fitness and recreation equipment for activities |
| • SISXCAI003  | Conduct non-instructional sport, fitness or recreation sessions |
| • SISSSOF101  | Develop and update officiating knowledge                        |

To accommodate the practical elements for this course students will be required to attend a period 0 and will be able to go home early on another day.



# HUMANITIES AND SOCIAL SCIENCE

## ATAR ACCOUNTING AND FINANCE AEACF

- 2019 Course cost \$80 per year
- Prerequisite: B grade or higher in Year 10 HASS

The Accounting and Finance ATAR course focuses on financial literacy and aims to provide students with the knowledge, understandings and a range of skills that enables them to make sound financial judgments. Students develop an understanding that financial decisions have far reaching consequences for individuals and business. The course will provide students with the understanding of the systems and processes through which financial practices and decision making are carried out, as well as the ethical, social and environmental issues involved. Through the preparation, examination and analysis of a variety of financial documents and systems, students develop an understanding of the fundamental principles and practices upon which accounting and financial management is based. An understanding and application of these principles and practices enables students to analyse their own financial data and that of businesses and make informed decisions, forecasts of future performance, and recommendations based on that analysis.

Students will require the following:

- Textbook

---

## ATAR ECONOMICS AEECO

- 2019 Course cost \$85 per year
- Prerequisite: B grade or higher in Year 10

Economics explores the choices which all people, groups and societies face as they confront the ongoing problem of satisfying their unlimited wants with limited resources. The Economics ATAR course aims to develop students' ability to analyse the allocation, utilisation and distribution of scarce resources that determine our wealth and wellbeing. The study of Economics provides a framework for examining society's issues and identifying possible solutions which assist decision making. The emphasis of the course is on the Australian economy. This course prepares students for rational decision making in a variety of businesses and industries and also prepares students for further studies at university or TAFE.

Students will require the following:

- Textbook



# HUMANITIES AND SOCIAL SCIENCE

## ATAR GEOGRAPHY

### AE GEO

- 2019 Course cost \$80 per year
- Prerequisite: B grade or higher in Year 10 HASS

The study of the Geography ATAR course draws on students' curiosity about the diversity of the world's places and their peoples, cultures and environments. It provides students with the knowledge and understanding of the nature, causes and consequences of natural and ecological hazards, international integration in a range of spatial contexts, land cover transformations, and the challenges affecting the sustainability of places. In the ATAR course, students learn how to collect information from primary and secondary sources, such as field observation and data collection, mapping, monitoring, remote sensing, case studies and reports. This course prepares students for solving real problems in a variety of real-world settings and also prepares students for further studies at university or TAFE.

Students will require the following:

- Textbook

---

## ATAR MODERN HISTORY

### AE HIM

- 2019 Course cost \$80 per year
- Prerequisite: B grade or higher in Year 10 HASS

Studying the Modern History ATAR course enables students to become critical thinkers and helps inform their judgments and actions in a rapidly changing world. Students are exposed to a variety of historical sources, including government papers, extracts from newspapers, letters, diaries, photographs, cartoons, paintings, graphs and secondary sources, in order to determine the cause and effect, and the motives and forces influencing people and events. Through the process of historical inquiry, students are encouraged to question and evaluate historical sources; identify various representations and versions of history; use evidence to formulate and support their own interpretations; and communicate their findings in a variety of ways. This course prepares students to develop higher-order skills such as becoming critical thinkers and prepares them for further studies at university or TAFE.

Students will require the following:

- Textbook





# HUMANITIES AND SOCIAL SCIENCE

## *General* CAREER AND ENTERPRISE GECAE

➤ 2019 Course cost \$75 per year

Career education involves learning to manage and take responsibility for personal career development. The Career and Enterprise General course involves recognising one's individual skills and talents, and using this understanding to assist in gaining and keeping work. The course develops a range of work skills and an understanding of the nature of work. Key components of the course include: the development of an understanding of different personality types and their link to career choices; entrepreneurial behaviours; learning to learn; and the exploration of social, cultural and environmental issues that affect work, workplaces and careers.

---

## *General* GEOGRAPHY GEGEO

➤ 2019 Course cost \$80 per year

In the Geography General course students learn how to collect information from primary and secondary sources, such as field observation and data collection, mapping, monitoring, remote sensing, case studies and reports. Geography as a discipline values imagination, creativity and speculation as modes of thought. It develops students' knowledge about the interconnections between places and explores the spatial patterns and processes related to environments at risk, and to the protection of such environments through management at local, regional and global levels. This course prepares students for critically solving problems that effect today's society preparing them for post-school opportunities of employment and further training.





# HUMANITIES AND SOCIAL SCIENCE

## BUSINESS

### BSB20115 Certificate II in Business CIIBU

This qualification is delivered over two years under the auspices of Skills Strategies International and Pathways Skills Centre RTO 2401.

➤ 2019 Course cost \$65 per year

This course will teach you the fundamentals of working in a business office environment. This course has been designed to teach you about different procedures in business including becoming proficient in office technology, dealing with customers and clients, and developing your writing skills. Students will achieve basic proficiency in general office administration, including word processing, spreadsheets, workplace health and safety, and workplace communication.

#### Core Units

- BSBWHS201                      Contribute to health and safety of self and others

#### Elective Units

- BSBCMM201                      Communicate in the workplace
- BSBCUS201                      Deliver a service to customers
- BSBIND201                      Work effectively in a business environment
- BSBITU212                      Create and use spreadsheets
- BSBITU211                      Produce digital text documents
- BSBITU213                      Use digital technologies to communicate remotely
- BSBITU312                      Create electronic presentations
- BSBSUS201                      Participate in environmentally sustainable work practices
- BSBWOR202                      Organise and complete daily work activities
- BSBWOR203                      Work effectively with others
- BSBWOR204                      Use business technology



# LANGUAGES

## ATAR JAPANESE AS A SECOND LANGUAGE

### AEJSL

- 2019 Course cost \$70 per year
- Prerequisite: B grade or higher in Year 10 Japanese

This course is designed to further develop students' knowledge and understanding of the culture and the language of Japanese-speaking communities, providing them with opportunities to gain a broader and deeper understanding of the Language and extend and refine their communication skills. The course focuses on the interrelationship of language and culture, and equips students with the skills needed to function in an increasingly globalised society, a culturally and linguistically diverse local community, and provides them with the foundation for life-long language learning. Relevant and engaging tasks, delivered through a range of appropriate contexts and topics, develop literacy in the language as well as extend literacy development in English.

Students will require the following:

- Textbook

---

## *General* JAPANESE AS A SECOND LANGUAGE

### GEJSL

- 2019 Course cost \$40 per year
- Prerequisite: Completed Year 10 Japanese

The Second Language General course is designed to enable students to gain knowledge and an understanding of the culture and the language of Japanese-speaking communities. The course focuses on the interrelationship of language and culture, and equips students with the skills needed to function in an increasingly globalised society, a culturally and linguistically diverse local community, and provides them with the foundation for life-long language learning. Relevant and engaging tasks, delivered through a range of appropriate contexts and topics, develop literacy in the language as well as extend literacy development in English.





# LANGUAGES

## Enrolment criteria for WACE language courses

If you wish to study a WACE language course, there is a form that needs to be completed to ensure you are permitted to enrol in the selected course. Enrolment criteria considerations include residency in the country where that language is spoken and exposure to that language either at a school or in the home. It is your responsibility to ensure that the form is completed fully and accurately before it is submitted.

Further guidance and advice related to enrolments in a language course can be found on the Authority website at [here](#) or from the TIC Languages.







# MATHEMATICS

The four Mathematics courses are differentiated, each focusing on a pathway that will meet the learning needs of a particular group of senior secondary students.

## ATAR MATHEMATICS APPLICATIONS AEMAA

- 2019 Course cost \$75 per year
- Prerequisite: B grade or higher in Year 10 Mathematics

This course focuses on the use of mathematics to solve problems in contexts that involve financial modelling, geometric and trigonometric analysis, graphical and network analysis, and growth and decay in sequences. It also provides opportunities for students to develop systematic strategies based on the statistical investigation process for answering statistical questions that involve analysing univariate and bivariate data, including time series data.

The Mathematics Applications ATAR course is designed for students who want to extend their mathematical skills beyond Year 10 level, but whose future studies or employment pathways do not require knowledge of calculus. The course is designed for students who have a wide range of educational and employment aspirations, including continuing their studies at university or TAFE.

Students will require the following:

- A study guide and a Casio ClassPad calculator
- Textbook

---

## ATAR MATHEMATICS METHODS AEMAM

- 2019 Course cost \$75 per year
- Prerequisite: B grade or higher in Year 10 Mathematics

This course focuses on the use of calculus and statistical analysis. The study of calculus provides a basis for understanding rates of change in the physical world, and includes the use of functions, their derivatives and integrals, in modeling physical processes. The study of statistics develops students' ability to describe and analyse phenomena that involve uncertainty and variation.

Mathematics Methods provides a foundation for further studies in disciplines in which mathematics and statistics have important roles. It is also advantageous for further studies in the health and social sciences. In summary, this course is designed for students whose future pathways may involve mathematics and statistics and their applications in a range of disciplines at the tertiary level.

Students will require the following:

- A study guide and a Casio ClassPad calculator



# MATHEMATICS

## ATAR MATHEMATICS SPECIALIST AEMAS

- 2019 Course cost \$75 per year
- Prerequisite: High A grade in Year 10 Mathematics

This course provides opportunities, beyond those presented in the Mathematics Methods ATAR course, to develop rigorous mathematical arguments and proofs, and to use mathematical models more extensively. Mathematics Specialist contains topics in functions and calculus that build on and deepen the ideas presented in the Mathematics Methods course, as well as demonstrate their application in many areas. The Mathematics Specialist course also extends understanding and knowledge of statistics and introduces the topics of vectors, complex numbers and matrices. Mathematics Specialist is the only ATAR mathematics course that should not be taken as a stand-alone course and must be studied in conjunction with the Mathematics Methods ATAR course as preparation for entry to specialised University courses such as Engineering, Physical Sciences and Mathematics.

Students will require the following:

- A study guide and a Casio ClassPad calculator
- Textbook

---

## *General* MATHEMATICS ESSENTIAL GEMAE

- 2019 Course cost \$75 per year

The Mathematics Essential General course focuses on using mathematics effectively, efficiently and critically to make informed decisions. It provides students with the mathematical knowledge, skills and understanding to solve problems in real contexts for a range of workplace, personal, further learning and community settings. This course provides the opportunity for students to prepare for post-school options of employment and further training.

Students will require the following:

- Textbook





# SCIENCE

## ATAR CHEMISTRY

### AECHE

- 2019 Course cost \$80 per year
- Prerequisite: B grade or higher in Year 10 Science and C grade in Year 10 Mathematics

The Chemistry ATAR course equips students with the knowledge and understanding to make the most of opportunities to investigate properties and reactions of materials. Theories and models are used to describe, explain and make predictions about chemical systems, structures and properties. Students recognise hazards and make informed, balanced decisions about chemical use and sustainable resource management. Investigations and laboratory activities develop an appreciation of the need for precision, critical analysis and informed decision making.

This course prepares students to be responsible and efficient users of specialised chemical products and processes at home or in the workplace. It also enables students to relate chemistry to other sciences including; biology, geology, medicine, molecular biology and agriculture. This unit develops a strong foundation for further study in the sciences.

Students will require the following:

- Study guide
- Scientific calculator
- Digital resources

---

## ATAR HUMAN BIOLOGY

### AEHBY

- 2019 Course cost \$80 per year
- Prerequisite: B grade or higher in Year 10 Science and C grade in Year 10 Mathematics

The Human Biology ATAR course gives students a chance to explore what it is to be human—how the human body works, the origins of human variation, inheritance in humans, the evolution of the human species and population genetics. Through their investigations, students research new discoveries that increase our understanding of human dysfunction, treatments and preventative measures. Practical tasks are an integral part of this course and develop a range of laboratory skills; for example, biotechnology techniques. Students learn to evaluate risks and benefits to make informed decisions about lifestyle and health topics, such as diet, alternative medical treatments, use of chemical substances and the manipulation of fertility.

Students will require the following:

- Study guide
- Scientific calculator
- Textbook



# SCIENCE

## ATAR PHYSICS

### AEPHY

- 2019 Course cost \$80 per year
- Prerequisite: B grade or higher in Year 10 Science and Mathematics

In the Physics ATAR course students will learn how energy and energy transformations can shape the environment. From the small scale, in quantum leaps inside an atom's electron cloud, through the human scale, in vehicles and the human body, to the large scale, in interactions between galaxies. Students have opportunities to develop their investigative skills and use analytical thinking to explain and predict physical phenomena.

Students plan and conduct investigations to answer a range of questions, collect and interpret data and observations, and communicate their findings in an appropriate format. Problem-solving, mathematical reasoning and using evidence to make and justify conclusions are transferable skills that are developed in this course.

Students will require the following:

- Study guide
- Scientific calculator
- Digital resources

---

## *General* HUMAN BIOLOGY

### GEHBY

- 2019 Course cost \$80 per year

In this practical based General course, the focus is on understanding how the body systems maintain and reproduce life. The course content relates directly and indirectly to many different occupations, such as social work, medical and paramedical fields, food and hospitality, childcare, sport, science and health education. The course is designed to help students make informed choices as responsible citizens in society.

There is a focus on the characteristics and support of life, and the role the respiratory, digestive, circulatory, urinary and reproductive systems. From the very first moments through to the birth of a baby are explored.

Throughout, students will conduct Science Inquiries. A wide range of practical, hands on activities with a focus on discovery learning, enriched with relevant excursions, will be used to build knowledge.





# SCIENCE

## *General* INTEGRATED SCIENCE GEISC

➤ 2019 Course cost \$80 per year

The Integrated Science General course enables students to investigate science issues in the context of the world around them. It encourages students to develop their scientific skills of curiosity, observation, collection and analysis of evidence in a range of contexts. The multidisciplinary approach, including aspects of biology, chemistry, geology and physics, further encourages students to be curious about the world around them and assume a balanced view of the benefits and challenges presented by science and technology.

Students conduct practical investigations that encourage them to apply what they have learnt in class to real-world situations and systems, such as aquaculture and horticulture.





# TECHNOLOGIES

## *ATAR Engineering Studies*

### AEEST

- 2019 Course cost \$70 per year
- Prerequisite: B grade or higher in Year 10 Mathematics

The Engineering Studies ATAR course provides opportunities for students to investigate, research and present information, design and make products and undertake project development in a mechatronics context. These opportunities allow students to apply engineering processes, understand underpinning scientific and mathematical principles, develop engineering technology skills and explore the interrelationships between engineering and society. The Engineering Studies ATAR course is essentially a practical course focusing on real-life contexts. It aims to prepare students for a future in an increasingly technological world by providing the foundation for life-long learning about engineering. It is particularly suited to those students who are interested in engineering and technical industries as future careers.

Students who study Mathematics Methods, Mathematics Specialist and Physics would be most suitable.

---

## *General* APPLIED INFORMATION AND TECHNOLOGY

### GEAIT

- 2019 Course cost \$70 per year

The Applied Information Technology General course provides students with the knowledge and skills to use a range of computer hardware and software to create manipulate and communicate information in an effective, responsible and informed manner. Students develop an understanding of computer systems; the management of data; and the use a variety of software applications to investigate, design, construct and evaluate digital products and digital solutions. The course offers pathways to further studies and a range of technology-based careers and a set of skills that equip students for the 21st century and give them an appreciation of the impact of information technology on society.



# TECHNOLOGIES

## *General* CHILDREN, FAMILY AND THE COMMUNITY GECFC

➤ 2019 Course cost \$170 per year

The Children, Family and the Community General course focuses on factors that influence human development and the wellbeing of individuals, families and communities. Students explore the health of individuals and communities and the protective and preventative strategies that impact on growth and development. They engage in shared research, examine goal setting, self-management, decision making, communication and cooperation skills when creating products, services or systems that will assist individuals, families and communities to achieve their needs and wants. Contemporary Australian issues or trends relating to families and communities at the state and national level are examined in practical ways.

---

## *General* FOOD SCIENCE AND TECHNOLOGY GEFST

➤ 2019 Course cost \$230 per year

The Food Science and Technology General course provides opportunities for students to explore and develop food-related interests and skills. Food impacts on every aspect of daily life and is essential for maintaining overall health and wellbeing. Students organise, implement and manage production processes in a range of food environments and understand systems that regulate food availability, safety and quality. Knowledge of the sensory, physical, chemical and functional properties of food is applied in practical situations. Students investigate the food supply chain and value-adding techniques applied to food to meet consumer and producer requirements. Principles of dietary planning, adapting recipes, and processing techniques, are considered for specific nutritional needs of demographic groups. Occupational safety and health requirements, safe food handling practices, and a variety of processing techniques, are implemented to produce safe, quality food products. This course may enhance employability and career opportunities in areas that include nutrition, health, food and beverage manufacturing, food processing, community services, hospitality and retail.



# TECHNOLOGIES

## *General* MATERIALS DESIGN AND TECHNOLOGY METAL GEMDTM

➤ 2019 Course cost \$220 per year

Students interact with a variety of metal items and products that have been designed to meet certain needs. Students are introduced to the fundamentals of design. They learn to communicate various aspects of the technology process by constructing what they design.

Throughout the process, students learn about the origins, classifications, properties and suitability for purpose of the materials they are using, and are introduced to a range of production equipment and techniques. They develop materials manipulation skills and production management strategies, and are given the opportunity to realise their design ideas through the production of their design project. They work within a defined environment and learn to use a variety of relevant technologies safely and effectively.

---

## *General* MATERIALS DESIGN AND TECHNOLOGY TEXTILES GEDTT

2019 Course cost \$240 per year

MDT Textiles allows students to develop the necessary skills to identify and pursue opportunities in textiles and fashion design. Through exploring, manipulating and embellishing with textile materials, students develop advanced practical skills with an expectation for students to undertake independent projects and develop a design portfolio. Students take inspiration from their personal beliefs, values and needs to generate creative and sustainable designs. Further investigation of the design fundamentals and the impact of the properties of materials will contribute to students understanding the impact of choices made by individuals and groups.





# TECHNOLOGIES

## *General* MATERIALS DESIGN AND TECHNOLOGY WOODWORK GEMDTW

➤ 2019 Course cost \$220 per year

Students interact with a variety of timber items and products that have been designed to meet certain needs. Students are introduced to the fundamentals of design. They learn to communicate various aspects of the technology process by constructing what they design.

Throughout the process, students learn about the origins, classifications, properties and suitability for purpose of the materials they are using, and are introduced to a range of production equipment and techniques. They develop materials manipulation skills and production management strategies, and are given the opportunity to realise their design ideas through the production of their own design project. They work within a defined environment and learn to use a variety of relevant technologies safely and effectively.

\*Students are only able to select two of the three Materials, Design and Technology Contexts.





# TECHNOLOGIES

## COMMUNITY

### CHC22015 Certificate II in Community Services CIICO

This qualification is delivered over two years under the auspices of Australian YMCA Institute of Education and Training RTO 3979.

➤ 2019 Course cost \$230 per year

This qualification may be used as a pathway for workforce entry as community services workers who provide a first point of contact and assist individuals in meeting their immediate needs. At this level, work takes place under direct, regular supervision within clearly defined guidelines.

Five core units are covered over two years:

- First point of contact
- Communicate and work in health or community services
- Work with diverse people
- Participate in workplace health and safety
- Organise and complete daily work activities

Four elective units are also delivered to compliment the core units and enhance the student's employment opportunities beyond school.

It is recommended that students have successfully completed Year 10 Childcare.

#### Core Units

- |             |  |
|-------------|--|
| • CHCCOM001 | Provide first point of contact                       |
| • CHCCOM005 | Communicate and work in health or community services |
| • CHCDIV001 | Work with diverse people                             |
| • HLTWHS001 | Participate in workplace health and safety           |

#### Elective Units

- |             |   |
|-------------|---|
| • FSKLRG09  | Use strategies to respond to routine workplace problems |
| • FSKOCM07  | Interact effectively with others at work                |
| • HLTFSE001 | Follow basic food safety practices                      |
| • HLTAID003 | Provide First Aid                                       |



# TECHNOLOGIES

## ENGINEERING

### MEM20413 Certificate II in Engineering Pathways CIIENG

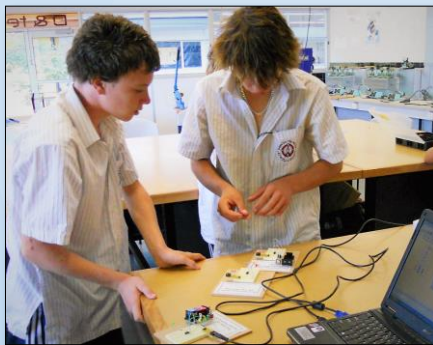
This qualification is delivered over two years under the auspices of South Metropolitan TAFE RTO 52787.

- 2019 Course cost \$280 per year
- Prerequisite: High C grade in Year 10 Mathematics and C grade or higher in Year 10 English

The Certificate II in Engineering Pathways is designed for students interested in engineering or related working environments. The skills and concepts embedded within this qualification will teach students the base knowledge needed to help obtain an apprenticeship in mechanical, industrial and production engineering environments, as well as providing insight into the varied engineering fields.

Students will require the following:

- Laptop
- Approved safety boots
- Access to the internet at home
- Uniform
- Safety glasses – one pair supplied
- Safety gloves – one pair supplied



#### Core Units

- |              |  |
|--------------|--|
| • MEM13014A  | Apply principles of occupational health and safety in the work environment |
| • MEMPE005A  | Develop a career plan for the engineering and manufacturing industry       |
| • MEMPE006A  | Undertake a basic engineering project                                      |
| • MSAENV272B | Participate in environmentally sustainable work practices                  |

#### Elective Units

- |                |                                      |
|----------------|--------------------------------------|
| • MEM16006A    | Organise and communicate information |
| • MEM16008A    | Interact with computing technology   |
| • MEM18001C    | Use hand tools                       |
| • MEM18002B    | Use power tools/hand held operations |
| • MEMPE001A    | Use engineering workshop machines    |
| • MEMPE002A    | Use electric welding machines        |
| • MEMPE004A    | Use fabrication equipment            |
| • MSAPMSUP106A | Work in a team                       |

To accommodate the practical elements for this course students will be required to attend a period 0 and will be able to go home early on another day.



# TECHNOLOGIES

## HOSPITALITY

### SIT20316 Certificate II in Hospitality CIIHOS

This qualification is delivered over two years under the auspices of Hospitality Group Training Australia International College RTO 6996.

➤ 2019 Course cost \$325 per year

The Certificate II in Hospitality qualification offers students the chance to develop an understanding of the key tasks and skills required to begin working in the hospitality sector.

In this two-year qualification students will learn how to perform routine and repetitive hospitality tasks, industry expectations and build key skill sets. The theory component of the qualification is completed through online modules and it is very important that students have their own personal laptop or MacBook as well as internet access at home. Students are also required to purchase and wear a specified Chef's uniform if they select this qualification.

Students will require the following:

- Laptop
- Access to the internet at home
- Chef uniform (hat, apron, white top and pants)
- A portfolio for storing work

#### Core Units

- |              |  |
|--------------|--|
| • BSBWOR203  | Work effectively with others                           |
| • SITHIND002 | Source and use information in the hospitality industry |
| • SITHIND003 | Use hospitality skills effectively                     |
| • SITXCCS003 | Interact with customers                                |
| • SITXCOM002 | Show social and cultural sensitivity                   |
| • SITXWHS001 | Participate in safe work practices                     |

#### Elective Units

- |              |  |
|--------------|--|
| • SITHIND001 | Use hygienic practices for hospitality service |
| • SITHFAB004 | Prepare and serve non-alcoholic beverages      |
| • SITHFAB005 | Prepare and serve espresso coffee              |
| • SITHFAB002 | Provide responsible service of alcohol         |
| • BSBCMM201  | Communicate in the workplace                   |
| • SITXCOM001 | Source and present information                 |



To accommodate the practical elements for this course students will be required to attend a period 0 and will be able to go home early on another day.





# THE ARTS

## ATAR DANCE

### AEDAN

- 2019 Course cost \$110 per year
- Prerequisite: B grade or higher in Year 10 English

The Dance ATAR course develops and presents ideas through a variety of genres, styles and forms, as it provides a unique way in which to express our cultural view and understanding of the world. Through critical decision making in individual and group work, movement is manipulated and refined to reflect the choreographer's intent. Students use a wide range of creative processes, such as improvisation and the use of choreographic elements and devices, and draw on their own physicality and the interpretation of existing work of others to make dance works.

Through participation in the Dance ATAR course, students develop transferable skills essential to their future. These include communication skills, collaborative teamwork skills, negotiation and conflict resolution skills, problem-solving skills, as well as the ability to organise, analyse and evaluate. Participation may lead to opportunities for future study in dance or related arts fields.

It is highly recommended that prior training in Dance has been undertaken in lower school or at an external dance school to be successful in this course.

---

## ATAR DRAMA

### AEDRA

- 2019 Course cost \$100 per year
- Prerequisite: B grade or higher in Year 10 English

The Drama ATAR course focuses on drama in practice and aesthetic understanding as students integrate their knowledge and skills. They engage in drama processes such as improvisation, play building, text interpretation, playwriting and dramaturgy. This allows them to create original drama and interpret a range of texts written or devised by others by adapting the theoretical approaches of drama practitioners like Stanislavski and Brecht. Students' work in this course includes production and design aspects involving directing, scenography, costumes, props, promotional materials, and sound and lighting. Increasingly, students use new technologies, such as digital sound and multimedia. They present drama to make meaning for a range of audiences and adapt their drama to suit different performance settings. The focus in this course is on both individual and ensemble performance, as well as the roles of actor, director, scenographer, lighting designer, sound designer, costume designer and dramaturge. Through participation in the Drama ATAR course, students develop transferable skills essential to their future. These include communication skills, collaborative teamwork skills, negotiation and conflict resolution skills, problem-solving skills, as well as the ability to organise, analyse and evaluate. Participation may lead to opportunities for future study in drama or related arts fields.

It is highly recommended that students have studied Drama in lower school and have gained the skills and understanding of concepts to be successful in this course.



# THE ARTS

## *General* DANCE GEDAN

➤ 2019 Course cost \$110 per year



The General Dance course provides students with an opportunity to develop skills within a variety of genres, styles and forms. Through individual and group work, dance ideas are explored, manipulated and refined, and presented to a range of audiences. Students draw on their own physicality and their interpretation of themes to make dance works in popular culture and Australian communities are key focal points within the course.

It is highly recommended that prior training in Dance has been undertaken in lower school or at an external dance school to be successful in this course.

---

## *General* DESIGN GRAPHICS GEDESG

➤ 2019 Course cost \$100 per year

The Design Graphics course aims to facilitate a deep and rich understanding of the role of design and the Graphic Designer in the modern world. We look at the role of design and how ideas, values, beliefs, attitudes and information are effectively communicated to audiences through graphic design, in both the print and digital form. Students will develop skills and processes for current and future industry and employment markets in the field of Graphic Design. Students are equipped with the knowledge and skills to understand design principles and processes, analyse problems and devise innovative strategies through projects. Students will have access to industry standard design suites and art studio facilities.

Students will require the following:

- Laptop
- Knowledge of Adobe Programs





# THE ARTS

## *General* DESIGN PHOTOGRAPHY *GEDESP*

➤ 2019 Course cost \$100 per year

The Design Photography course aims to facilitate a deep and rich understanding of the role of design and the photographer in the modern world. We look at the role of design and how ideas, values, beliefs, attitudes and information are effectively communicated to audiences through both printed and digital photography. Students will develop skills and processes for current and future industry and employment markets in the field of Photography. Students are equipped with the knowledge and skills to understand design principles and processes, analyse problems and devise innovative strategies through projects. Students will have access to DSLR cameras and industry standard editing suites.

\*Students are not able to select both General Design Graphics **and** General Design Photography.







# THE ARTS

## *General* DRAMA GEDRA

➤ 2019 Course cost \$100 per year

Drama is a vibrant and varied art form found in play, storytelling, street theatre, festivals, film, television, interactive games, performance art and theatres. It is one of the oldest art forms and part of our everyday life. Through taking on roles and enacting real and imagined events, performers engage audiences who suspend their disbelief to enter the world of the drama. Through drama, human experience is shared. Drama entertains, informs, communicates and challenges. In this course, students engage in both Australian and world drama practice. They understand how drama has changed over time and will continue to change according to its cultural context. Through the Drama General course, they can understand the experience of other times, places and cultures in an accessible, meaningful and enjoyable way. They understand the economic factors that affect drama practice and explore the vocational opportunities that drama offers.

Students engage in drama processes, such as improvisation, play building, text interpretation, playwriting and dramaturgy which allow them to create original drama and interpret a range of texts written or devised by others. Their work in this course includes production and design aspects involving sets, costumes, makeup, props, promotional materials, stage management, front-of-house activities, and sound and lighting. Increasingly, students use technologies, such as digital sound and multimedia. They present drama to a range of audiences and work in different performance settings.

It is highly recommended that students have studied Drama in lower school and have gained the skills and understanding of concepts to be successful in this course.







# THE ARTS

## *General* MUSIC *GEMUS*

➤ 2019 Course cost \$80 per year

The Music General course encourages students to explore a range of musical experiences, developing their musical skills and understanding, and creative and expressive potential, through a contemporary musical context.

The course provides opportunities for creative expression, the development of aesthetic appreciation, and understanding and respect for music and music practices across different times, places, cultures and contexts.

Students will listen, compose, perform and analyse music, developing skills to confidently engage with a diverse array of musical experiences both independently and collaboratively.

Students who learn instruments through the Instrumental Music School Service (formerly SIM) are able to continue their lessons through senior school and will undertake the Performance strand of the Practical component of the course. Other students will have the choice to participate in the Performance or Composition strand of the Practical component of the Music General course.

Studying music may also provide a pathway for further training and employment in a range of professions within the music industry.





# THE ARTS

## *General* VISUAL ART GEVA

➤ 2019 Course cost \$100 per year

In the Visual Arts General course, students engage in traditional, modern and contemporary media and techniques within the broad areas of art forms. The course promotes innovative practice. Students are encouraged to explore and represent their ideas and gain an awareness of the role that artists and designers play in reflecting, challenging and shaping societal values. Students are encouraged to appreciate the work of other artists and engage in their own art practice.

Students will base art making and interpretation on their lives and personal experiences, observations of the immediate environment, events and/or special occasions using a variety of materials. They will have the opportunity to explore and develop ideas for art making and interpretation through the investigation of different artists, art forms, processes and technologies.





# THE ARTS

## ICT20115 Certificate II in Information, Digital Media and Technology CIIDM

This qualification is delivered over two years under the auspices of Skills Strategies International and Pathways Skills Centre RTO 2401.

➤ 2019 Course cost \$100 per year

This qualification enables students to access further learning and skills suited to forging career pathways in Information Technology, Graphic Design, Film Production, Website Development and Coding, Programming, Video Game Development and Cyber Security. Within the Certificate II in IDMT qualification, students are introduced to the basics of working in an IT-based environment, fulfilling the duties of an IT Technician for a company, by using the Microsoft Office and Adobe Creative suites, and hardware such as the Canon DSLR, Sony Handicams, pre-set Computer Towers, Raspberry Pi3 and Arduino Small Board Computers.

Within the Certificate II qualification, students will design and code their own portfolio website, build, program, and troubleshoot a retro video game emulator mini-computer, plan and manage a video game tournament to market test usability and reception of their retro video game emulators, liaise with members of the Atwell College community to create marketing assets to promote events and initiatives such as Positive Behaviour Support and The Arts Showcase, alongside the development of generic ICT-based skills.

Students will require the following:

- Basic file management skills
- USB drive
- Headphones



### Core Units

- |             |   |
|-------------|---|
| • BSBWHS201 | Contribute to health and safety of self and others        |
| • BSBSUS201 | Participate in environmentally sustainable work practices |
| • ICTICT201 | Use computer operating systems and hardware               |
| • ICTICT202 | Work and communicate effectively in an ICT environment    |
| • ICTICT203 | Operate application software packages                     |
| • ICTICT204 | Operate a digital media technology package                |
| • ICTWEB201 | Use social media tools for collaboration and engagement   |

### Elective Units

- |             |  |
|-------------|--|
| • CUADIG201 | Maintain interactive content                                   |
| • CUADIG303 | Produce and prepare photo images                               |
| • CUAPOS201 | Perform basic vision and sound editing                         |
| • CUASOU202 | Perform basic sound editing                                    |
| • ICPDMT321 | Capture a digital image  |
| • ICTICT205 | Design basic organisational documents using computing packages |
| • ICTSAS208 | Maintain ICT equipment and consumables                         |





# Vocational Pathway (VET)

➤ Prerequisite: C grade or higher in Year 10 English and Mathematics

In the VET area, students have the opportunity to explore possible career pathways and investigate the training required at university, Training WA colleges or in apprenticeships or traineeships. There are opportunities to commence studies with Training WA colleges, apprenticeships or traineeships while still in Year 11, increasing eligibility for further skills training and future employment. Qualifications and units of competency are nationally recognised and also give students the opportunity to gain entry to university in a number of courses.

The Vocational Pathway consists of the following courses:

- English *General*
- Mathematics Essentials *General*
- Career and Enterprise *General*
- Certificate courses e.g. BSB20115 - Certificate II in Business
- One or two days attending a Registered Training Provider and
- One day of Authority Developed Workplace Learning (*see below*)

The VET Pathway has been developed for students who intend gaining entry to further training, apprenticeships or work. Some students have used their Certificate IV achieved in Year 11 or 12 to enter into a limited number of programs at Western Australian universities. Vocational Pathway students will have the opportunity of gaining dual certification: WACE and nationally recognised qualifications at the completion of the course.

There are a limited number of places available in this pathway so attendance and behaviour may also be a consideration.

## Authority Developed Workplace Learning (ADWPL)

Workplace Learning is an Authority-developed endorsed program that is managed by individual schools and open to students in Years 11 and 12. To complete this endorsed program, a student works in one or more real workplace/s to develop a set of transferable workplace skills. The student must record the number of hours completed and the tasks undertaken in the workplace in the Authority's *Workplace Learning Logbook*. The student must also provide evidence of his/her knowledge and understanding of the workplace skills by completing the Authority's *Workplace Learning Skills Journal* after each 55 hours completed in the workplace.





# Vocational Pathway (VET)

Unit equivalence is allocated on the basis of 1-unit equivalent for each 55 hours completed in the workplace, to a maximum of 4 units. The total number of hours completed in the workplace is reported on the student's WASSA.

Success in ADWPL may contribute significantly to a student's successful entry to a Training WA college, full time employment and traineeships/apprenticeships.

## Competency-Based Assessment

All qualifications provided at the College or accessed through a Registered Training Provider are competency based. The Australian National Training Authority (ANTA) defines a 'competency' as: *The specification of knowledge and skill, and the application of that knowledge and skill within an occupation or industry level to the standard or performance required in employment.* That is, the ability to perform a job to the level of performance required in the workplace. Competency-based assessment (CBA) is the process of collecting evidence and making judgments on whether a learner is able to demonstrate the competencies identified by industry as essential for satisfactory performance in the workplace. The learner demonstrates that she/he has achieved all the required competencies. A learner is assessed as either not yet having achieved the competencies or as competent.



# Alternative to Employment Preparation Training Pathway (AVET only)

**Minimum Entry Requirement:** For students who cannot access the ATAR or General course content with adjustment and/or disability provisions, or who are unable to progress directly to training from school, or who require modified and /or Independent Education Plans.

Alternative Vocational Education Training (AVET) is designed for students who have been identified as having a recognised disability under the *Disability Discrimination Act 1992*, and who meet the above criteria.

Atwell College Education Support Program (AVET) pathway caters for all student needs. The program offers individualised pathways that compliment student transitions into the community, supported and independent Workplace Learning, links to Disability Service providers, Traineeships or off campus study (TAFE). Atwell College has a focus on Student Centred Planning. This strategic and collaborative process utilises individualised support to maximise potential allowing both students and families to plan for a meaningful and purposeful future.

A variety of education programs are offered to students with high-support needs who will require an Alternative To Employment (ATE) focus post school. Training programs are individually tailored to enable students to access a range of opportunities that will develop skills to participate within their community. Individual plans are developed for each participant.

Options include:

Preliminary Units	<ul style="list-style-type: none"><li>• Individual Student Plans developed for every participant</li><li>• Any combination of the listed courses depending on the individual needs of the student.</li><li>• Course descriptions below</li></ul>
Endorsed Programs including ASDAN	
TAFE WA Education Support Programs	
Alternatives to Employment Preparation Training	
Workskills and Workplace Training	
TAFEWA Education Support Programs	

# Useful Contacts

'Year 12 in 2021: Information for Year 10 Subject Selection Guide' on the SCSA website [here](#).

University entrance requirements is available on the TISC website [here](#).

## Atwell College Head of Learning Areas

<b>English</b>	Mrs Lara Duffy	<a href="mailto:Lara.Duffy@educaiton.wa.edu.au">Lara.Duffy@educaiton.wa.edu.au</a>
<b>Health &amp; Physical Education</b>	Mr Aaron Harwood	<a href="mailto:Aaron.Harwood@education.wa.edu.au">Aaron.Harwood@education.wa.edu.au</a>
<b>Humanities &amp; Social Science</b>	Mr Payman Hasani	<a href="mailto:Payman.Hasani@education.wa.edu.au">Payman.Hasani@education.wa.edu.au</a>
<b>Languages</b>	Mr Kurt Regan Kurt	<a href="mailto:Kurt.Regan@education.wa.edu.au">Kurt.Regan@education.wa.edu.au</a>
<b>Mathematics</b>	Mr David Humphry	<a href="mailto:David.Humphry@education.wa.edu.au">David.Humphry@education.wa.edu.au</a>
<b>Science</b>	Ms Janine Daniel	<a href="mailto:Janine.Daniel@education.wa.edu.au">Janine.Daniel@education.wa.edu.au</a>
<b>Technologies</b>	Mr Wayne Spencer	<a href="mailto:Wayne.Spencer@education.wa.edu.au">Wayne.Spencer@education.wa.edu.au</a>
	Mrs Lana Tonkin	<a href="mailto:Lana.Tonkin@education.wa.edu.au">Lana.Tonkin@education.wa.edu.au</a>
<b>The Arts</b>	Mrs Kate Linton	<a href="mailto:Kate.Linton@education.wa.edu.au">Kate.Linton@education.wa.edu.au</a>
<b>VET</b>	Mrs Phillipa Ralston	<a href="mailto:Phillipa.Ralston@education.wa.edu.au">Phillipa.Ralston@education.wa.edu.au</a>
<b>AVET</b>	Mrs Ashley Miragliotta	<a href="mailto:Ashley.Miragliotta@education.wa.edu.au">Ashley.Miragliotta@education.wa.edu.au</a>





# Appendix 1: Atwell College Senior School Honours

## Atwell Honours

The purpose of the Atwell Honours program is to recognise student achievement in all aspects of school and extra-curricular activity. Due to the diverse strengths of individual students, there will be a number of areas of student participation in and out of the college that link to the Atwell College Pillars. These pillars are Environment, Connection, Holism, Opportunity (ECHO).

## Senior School Context

Points are gained towards honours by students studying any pathway in the senior school Years 11 and 12. In some instances, significant student achievement completed in Year 10 may also be considered.

## Honours Categories

There are five categories in which a student can achieve points towards honours. These are;

- Academic achievement
- Community service
- Contribution to the Arts
- Sporting achievement
- Service to the environment

## Certificates

There are three certificate levels, bronze (50 points), silver (100 points) and gold (150 points). Any award certificate cannot be an amalgamation of points from two categories and a single achievement cannot contribute points to two different categories. In order to achieve honours a student must have accumulated 150 points in two of the five categories.

## Essential Criteria for all candidates

1. Students applying must have good standing status.
2. The student must have attended class on a regular basis i.e. 90% or higher.
3. The student behaviour must be exemplary.

## Achieving an Award

The colour of the certificate indicates the level of achievement, that is, bronze, silver or gold.

- Students will be informed when they have achieved enough points for an award.
- For extra- curricular activity, a committee will consider the evidence provided by the student to determine the amount of points to be awarded. The committee will consist of members in a voluntary capacity to make judgments based on evidence provided by the student and substantiated via the “recognition and evidence of extracurricular activity” form.
- An academic award will be determined by a scoring system. “A” grade = 10 points, “B” grade = 8 points, “C” grade = 5. Grades will be collated from all Year 11 and 12 reports.
- A student may not use a single achievement to gain points toward 2 or more categories.



# Appendix 1: Atwell College Senior School Honours

## **Achievement of certificates (what the student receives)**

A colour certificate will be awarded with the accompanying badge. Gold certificates will be presented in a portfolio and acknowledged at the farewell assembly.

- 50 points, BRONZE Certificate – presented to the recipient on an individual level with badge
- 100 points, SILVER Certificate – presented to the recipient on an individual level with badge
- 150 points, GOLD Certificate – whole school assembly, presentation of certificate in portfolio. Badge already provided

## **Achievement of Atwell Honours**

- Once two categories have been achieved to Gold Level, the student will have fulfilled the requirements to graduate with Honours. Students who achieve Honours will have their names recognised on an Honours Board in the main college administration building
- At graduation, the leavers sash will be highlighted with a gold trim
- A certificate stating that the student has graduated with honours is given
- The student will have their photograph displayed with other award winners
- The student will be given recognition of their achievement at the college and at the leaver's ceremony

## **Examples of Extra-Curricular Activities**

- Rock Eisteddfod/Drama performances/College productions/College band
- Debating teams
- Effective student councilor representation
- Representing the college in sport teams, coaching or managing teams outside of the college
- State/National representation in any field
- Activities assisting a staff member out of class time
- Any completed course that does not form a part of a course of study e.g. First aid, welding, computing etc.
- Community service as part of a College project
- Holiday or weekend work experience resulting in a certificate being awarded (not SWL or paid ongoing part time or casual employment)
- Charity work
- College band
- Student committees
- Representing the College at public functions
- Volunteer work within the community/significant individual acts of community service
- Duke of Edinburgh award, Young achievers award
- Educational competition, e.g. Mathematics and Science competitions
- Other major achievements that are directly related to being a member of the College for which the College receives recognition e.g. scholarships, awards



## ATWELL COLLEGE

**P: (08) 6174 2200**

201 Brenchley Drive, Atwell W A 6164

**E: [atwell.college@education.wa.edu.au](mailto:atwell.college@education.wa.edu.au)**

**W: [www.atwellcollege.wa.edu.au](http://www.atwellcollege.wa.edu.au)**